

IPI INTERNATIONAL
PARKING
INSTITUTE



350

International
Parking Institute

MOVING



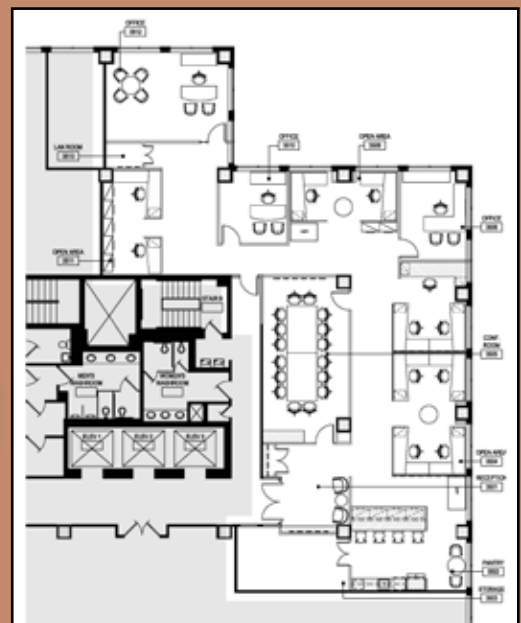
IPI moves its headquarters to the heart of association central.

By Henry Wallmeyer

DOES THE INTERNATIONAL PARKING INSTITUTE (IPI) take itself too seriously? Perhaps its recent move 40 miles north to Alexandria, Va., after 25 years in Fredericksburg was the ultimate practice-what-you-preach—after all, the association says that parking is about moving people forward.

Or was the motivation a famous quote by Oliver Wendell Holmes: “The great thing in the world is not so much where we stand, as in what direction we are moving.” Maybe this is about IPI moving in great directions, both figuratively and literally.

The real reasons are much more practical, and the new office is proving a perfect match for IPI’s mission, members, and staff.



ON UP



The new office was built-out specifically for IPI.



An onsite fitness center is one benefit of the new space.

Behind the Move

Next to the federal government, the largest employer segment in the Washington, D.C., metro area is associations and not-for-profit organizations. Washington, D.C., has the largest concentration of professional associations in the country, but Alexandria, Va., is close behind in fourth place (New York and Chicago are two and three, respectively, on the list).

Moving to the Washington, D.C., metro area allowed IPI to rejoin its association colleagues in and near the city, improve its operational efficiencies, and boost its ability to serve its members. There were quite a number of reasons to relocate the IPI headquarters; the primary ones were:

- Community.** IPI's association partners (including the Urban Land Institute, International Downtown Association, National League of Cities, National Association of College and University Business Officers, American Institute of Architects, Building Owners and Managers Association International, and Institute of Transportation Engineers), government contacts (Department of Transportation Federal Highway Administration, Transportation Security Administration, First Observer), attorneys, the design company of the award-winning *The Parking Professional*, and two key contractors are in the Washington, D.C., metro area. The people and organizations that IPI meets with to develop and sustain new initiatives, hold meetings, and build relationships with are in the D.C. metro area.
- Professional Development.** The association for association professionals, the American Society of Association Executives (ASAE), is headquartered in Washington, D.C., and provides the specific training and educational opportunities that are most beneficial to IPI staff. By moving to the D.C. area, IPI is able to much more easily and less disruptively send staff to train with their peers.



HENRY WALLMEYER

is a staff member with IPI and executive director of the Association for Commuter Transportation. He can be reached at wallmeyer@actweb.org or 540.845.3146.

- Accessibility.** Being in the D.C. metro area provides the proximity to three major airports and a train station that allows for much easier and cost-effective opportunities to have meetings of IPI committees, board, executive committee, and other workgroups. It also provides the opportunity for cheaper and more effective staff travel. In fact, IPI hosted three meetings during the first week in its new office that would not have been possible at the former location.

How Did it Happen?

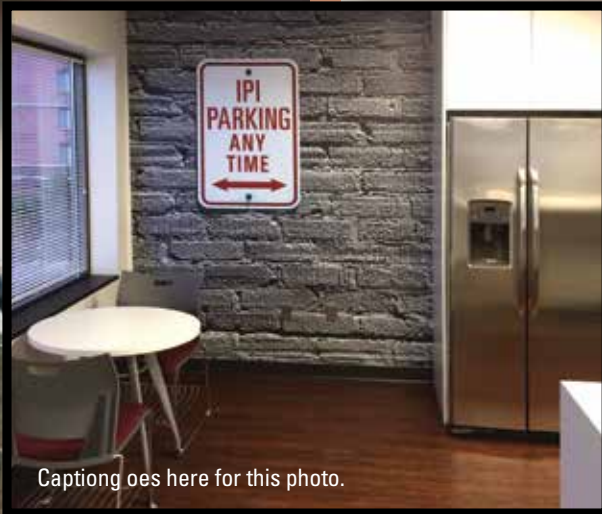
At its October 2012 meeting, the IPI Board of Directors approved the move of the association from Fredericksburg to the Washington, D.C., metro area when the Fredericksburg lease expired.

From October 2012 to April 2013, IPI worked with commercial real estate firm Studley to identify the appropriate building in the appropriate location with regard to size, rent, amenities, space layout, safety, public transportation, and parking. During this time, IPI reviewed and/or toured more than 50 properties in Maryland and Virginia.

In January 2013, IPI interviewed three interior design firms and selected Millar + Associates, a Washington, D.C.-based boutique design firm with expertise in commercial interior architecture, to transform IPI's chosen space into its new office. After negotiations with numerous property owners and much deliberation, IPI selected office space at 1330 Braddock Place, Alexandria, last June.

The Office

Alexandria was recently featured in a *Washington Post* article covering its robust urbanization. The article described the northeastern part of Alexandria as becoming transit-oriented and walkable and being transformed by higher density, mixed-use development,



Caption goes here for this photo.



Caption goes here for this photo.


and redevelopment. All of this development is financed primarily through private investment and is making the city more urban and urbane.

IPI's headquarters is part of the four-building Braddock Metro Center campus, is steps from the Braddock Road Metrorail station and rail right-of-way, and nearby multifamily housing developers are rapidly revitalizing the neighborhood. Six new residential infill projects are under construction or soon will be. Together, they encompass more than 1,500 units and more than 2,000 square feet of ground-floor retail space.

On-premise amenities IPI staff and visitors will enjoy include a fitness center, café, outdoor seating, and a soon-to-be-built conference center that will enable IPI to host meetings in state-of-the-art facilities.

IPI's new headquarters is served by Metro (the building is just one stop from Ronald Reagan National Airport); shuttle service to King Street in historic, waterfront Old Town Alexandria, Capital Bike Share, and of course parking. It is a five-minute drive to the airport and a 10-minute drive to downtown Washington, D.C.

Our Welcome Mat Is Out

Please come visit us, whether by car, bike, train, walking, or another means. We would love to show you the new space. 



Transportation Manager (Director, Transportation)

Responsibilities include but are not limited to strategic planning, policy development and enforcement, supervision, public relations, and serving on the Auxiliary and Business Services leadership team as well as other division and/or University-wide committees. The Director is accountable for cost containment initiatives and the development of new revenue sources to assure the financial success of multiple cost centers. This includes forecasting and overseeing multiple operational and special budgets for capital projects, construction programs and contract negotiations. The department utilizes 8 budgets for the \$17m operation. Due to the significant role that parking and transit play on the University Park campus, the Director performs a major role in campus planning with facilities personnel, specifically with the Office of Physical Plant's Planning Team and Project Managers. The Director contracts with transportation and/or parking consultants to perform the required transportation studies, feasibility studies, and/or facility designs and prepares bid specifications, scope of work and interview processes for such projects. The Director develops, implements and evaluates dynamic options and solutions to transportation and parking problems/issues with a focus on the University's Environmental Sustainability goals.

Typically requires a Bachelor's degree plus ten years of work related experience, or an equivalent combination of education and experience. Experience working with electronic records systems such as T2 Flex and Parking Access and Revenue Control systems is desired. Knowledge of public or private parking operations and construction and maintenance of parking facilities along with a Certified Administrator of Public Parking (C.A.P.P.) designation is preferred.

For more information and to apply to job 41676, visit <http://apptrkr.com/427656>

Penn State is committed to affirmative action, equal opportunity and the diversity of its workforce.