

International Parking Institute's Framework on Sustainability for Parking Design, Management, and Operations

Published January 2012

The International Parking Institute (IPI) recognizes and encourages parking professionals to contribute to sustainability through environmentally-conscious parking design, management, and operations that work together to promote smart growth, reduced carbon footprints, energy efficiency, and transportation alternatives. Despite a misperception that parking and sustainability are incompatible, research on emerging trends in parking identifies sustainability as a top priority for the industry and an area where significant strides are being made.

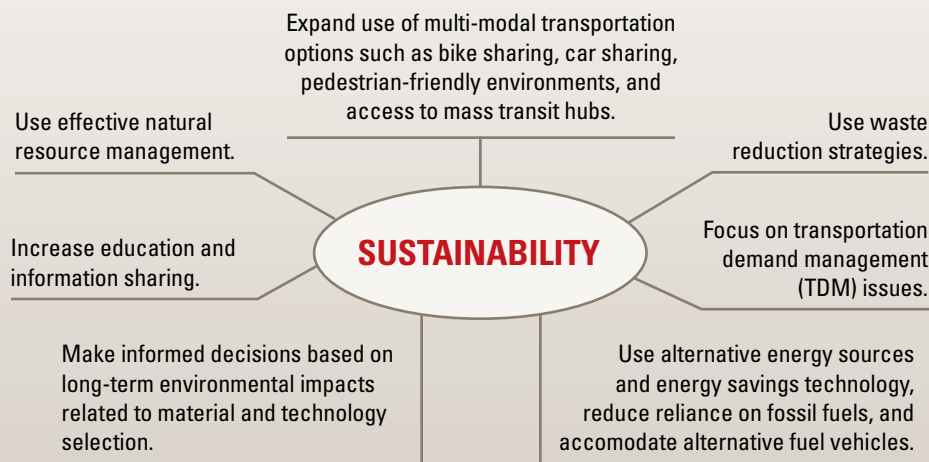


IPI encourages members to “meet the needs of today without compromising the ability of future generations to meet their own needs.”¹ Accordingly, IPI believes that parking and transportation solutions should balance economic feasibility, public health and welfare, and consideration of environmental impacts.

¹ Definition of Sustainability from the Brundtland Report, United Nations, 1987.

GOALS:

IPI's Framework on Sustainability is a continually evolving document that encourages these goals related to sustainability:



IPI Board of Directors

Casey Jones, CAPP

Chair
Boise State University

Cindy Campbell

Immediate Past Chair
California Polytechnic State University

Liliana Rambo, CAPP

Chair-Elect
Houston Airport Systems

Michael Swartz

Treasurer
Standard Parking Corporation

Wanda Brown

UC Davis Health System

Tracey Bruch, CAPP

Duncan Solutions, Inc.

Allen Corry, CAPP

Town of Greenwich

Rick Decker, CAPP

Minneapolis/St. Paul Int'l Airport

Timothy Haahs, P.E., AIA

Timothy Haahs & Associates, Inc.

Kim Jackson, CAPP

Princeton University

Michael Klein, CAPP

Albany Parking Authority

Dan Kupferman, CAPP

Walker Parking Consultants

Charles D. Reedstrom, CAPP

Kimley-Horn and Associates, Inc.

Michael Simmons

T2 Systems, Inc.

Molly Winter

City of Boulder

Shawn Conrad, CAE

International Parking Institute

ACTION ITEMS:

IPI as an organization, through its Sustainability Committee and in close collaboration with its members, will support these goals through 10 action items:

1. Developing seminars, webinars, e-learning opportunities, and speakers on topics related to sustainability, including a sustainability track at the annual IPI Conference & Expo.
2. Writing articles, white papers, and publications on the latest solutions that reflect a balance between economics, public health and welfare, and reduced environmental impacts.
3. Encouraging and recognizing achievements and improvements in sustainable parking and transportation through awards programs and exhibitor visibility.
4. Adding courses related to sustainability as part of the required curriculum for the Certified Administrator of Public Parking (CAPP) certification program.
5. Creating forums for peer-to-peer sharing on sustainable parking design, management, and operations.
6. Developing tools and resources to facilitate sustainable design, management, and operations that result in long-term energy efficiency, informed material and technology selection, the availability of multi-modal transportation options, effective natural resource management, and the use of waste reduction strategies.
7. Forging partnerships with government agencies, vendors, and non-profit organizations to facilitate goal setting, information sharing, and funding incentives that encourage investing in sustainable parking solutions.
8. Supporting third-party certification solutions that recognize achievement in sustainable parking.
9. Initiating research that informs, justifies, and/or provides lessons learned on sustainable parking solutions.
10. Communicating with media, influencers, and the public to create awareness of the positive impact parking professionals can have on sustainability.

Putting the Framework into Action: Well-planned parking and transportation solutions can increase the use of mass transportation, decrease the number of cars on the road, minimize fuel waste and emissions generated by prolonged searching for parking, and encourage alternative travel such as bicycling. Many parking facilities today are adopting best practices in sustainability through alternative fuel vehicles and new automobile technology, energy-efficient lighting, solar panels, and innovative water and waste management systems. They are also implementing recycling systems, using local and recycled materials in construction, and installing renewable energy technology such as photovoltaic, wind power, bio-fuels, and hydrogen fuel cells.

IPI Sustainability Committee

Rick Decker, CAPP

Co-Chair

Minneapolis/St. Paul Int'l Airport

Rachel Yoka, LEED AP BD+C, CPSM

Co-Chair

Timothy Haahs & Associates, Inc.

Bridgette Brady, CAPP

Washington State University

Michael Cramer

WINPARK

Hines Interests

Charles M. Debbout

Tempark

Michael Drow, CAPP

Standard Parking Corporation

Jason Dunster, P.E., LEED AP

Walker Parking Consultants

Sam Friedman

Parking In Motion

Wilson Johnson, Jr.

Transportation Professional

Peter W. Lange

Texas A&M University

Guillermo Leiva

New York City Department
of Transportation

Gabriel Mendez

Arizona State University
Tempe Campus

Isaiah R. Mouw, CAPP

Republic Parking System

Michael Nichols

Next Parking, LLC

Mark Pace

Montgomery College, Rockville

Jeff Petry

City of Eugene

J.C. Porter

Boise State University

Katie S. Stanciel

Hartsfield-Jackson Atlanta Airport

Michelle Wendler, AIA

Watry Design, Inc.